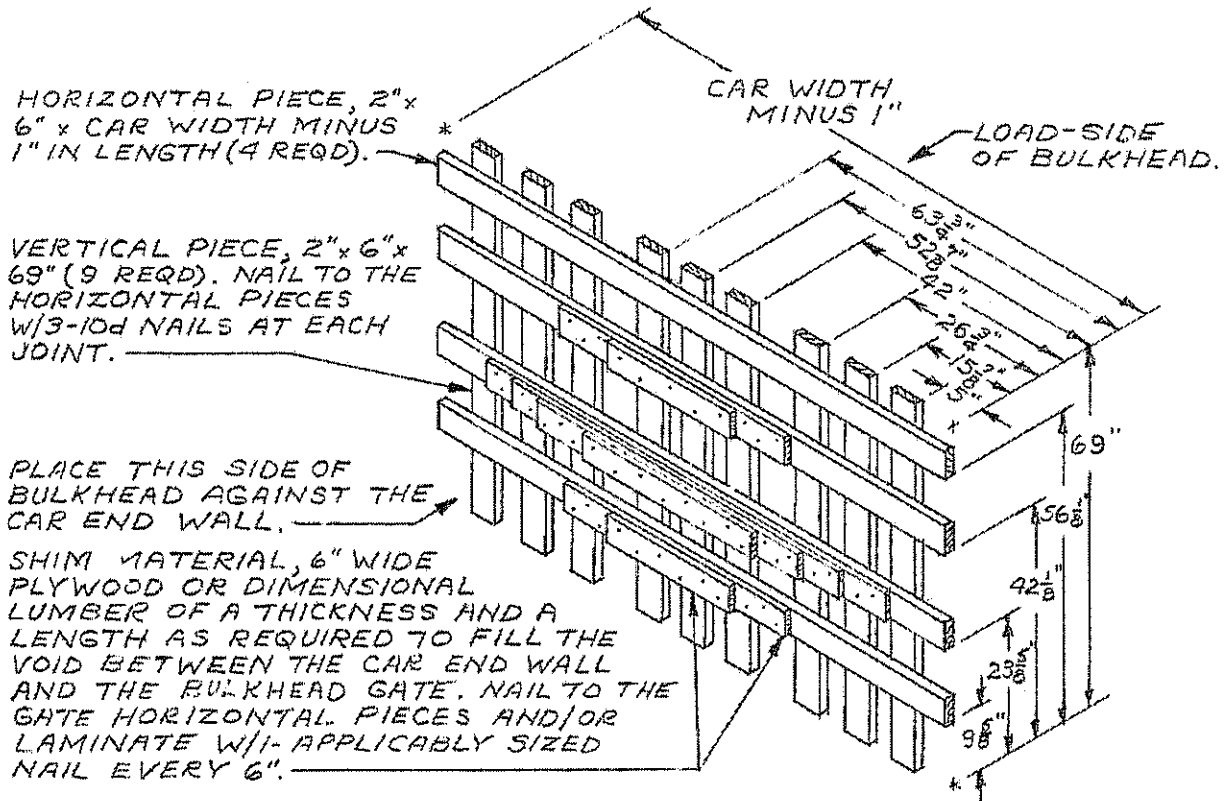


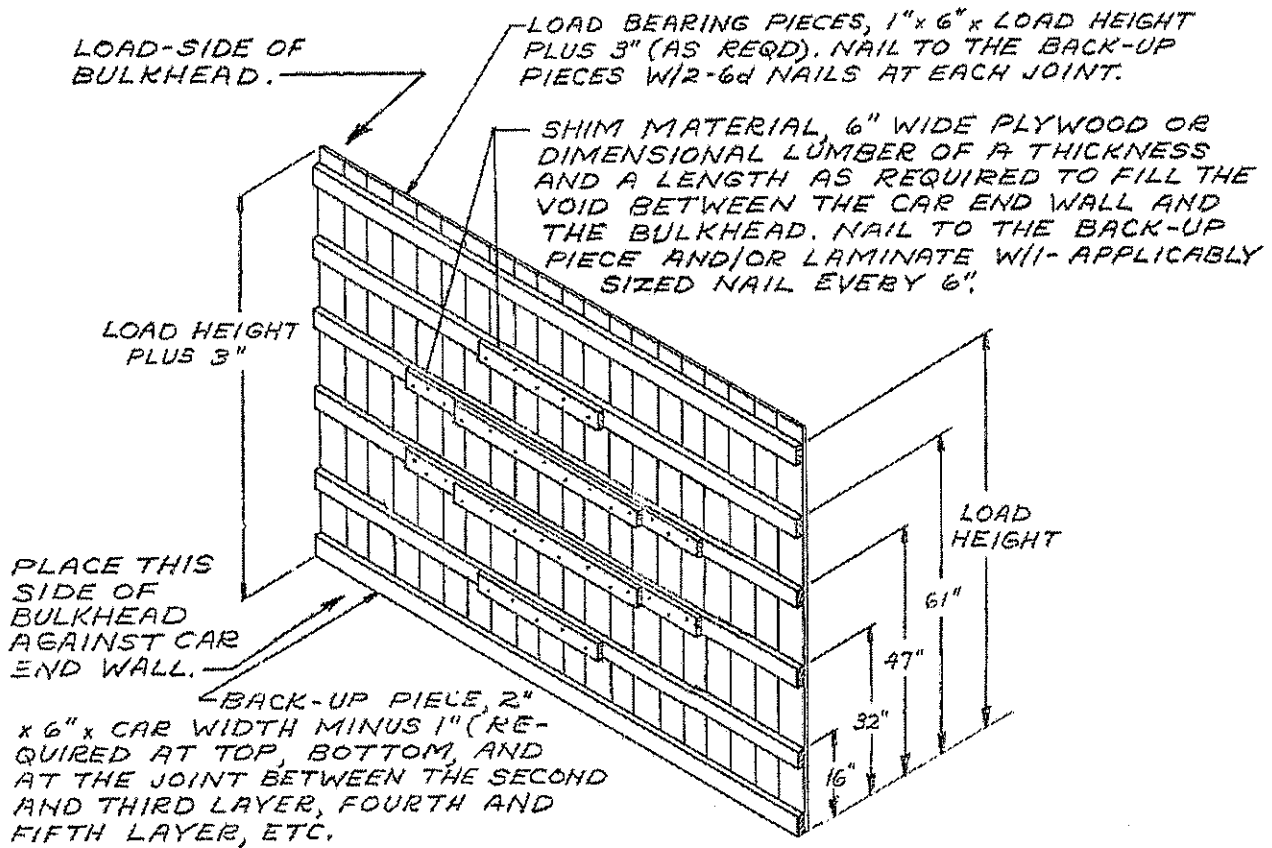
TYPICAL BOWED END WALL

AN END WALL BOWED OUTWARD FROM BOTTOM TO TOP IS SHOWN. A WALL COULD ALSO BE BOWED OUTWARD FROM SIDE TO SIDE, OR A COMBINATION OF THE TWO. IF A CAR HAS A BOWED END AMOUNTING TO 2" OR MORE, A BULKHEAD MUST BE USED. SUFFICIENT SHIM MATERIAL MUST BE FABRICATED AND NAILED TO THE BULKHEAD SO AS TO INSURE FULL BEARING ACROSS THE BOWED END OF THE CAR.



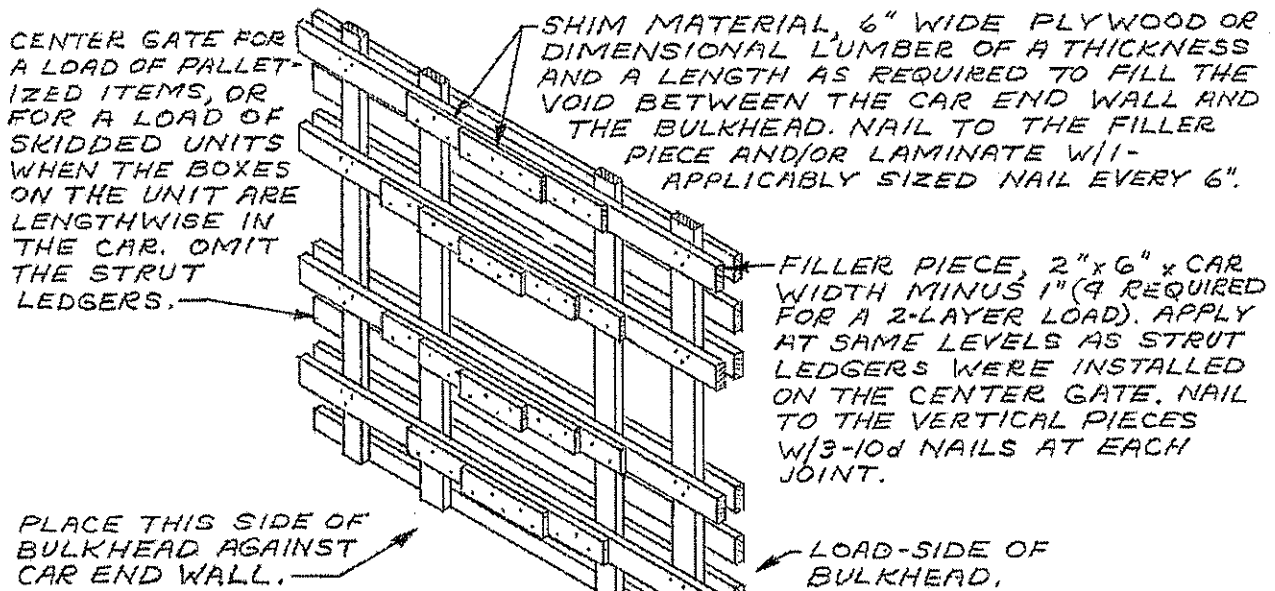
BULKHEAD

FOR USE AT END OF LOAD OF 500 POUND MK 82 BOMBS.



### BULKHEAD

FOR USE AT THE END OF A LOAD OF FIBERBOARD AND LIGHTLY CONSTRUCTED BOXES



### BULKHEAD

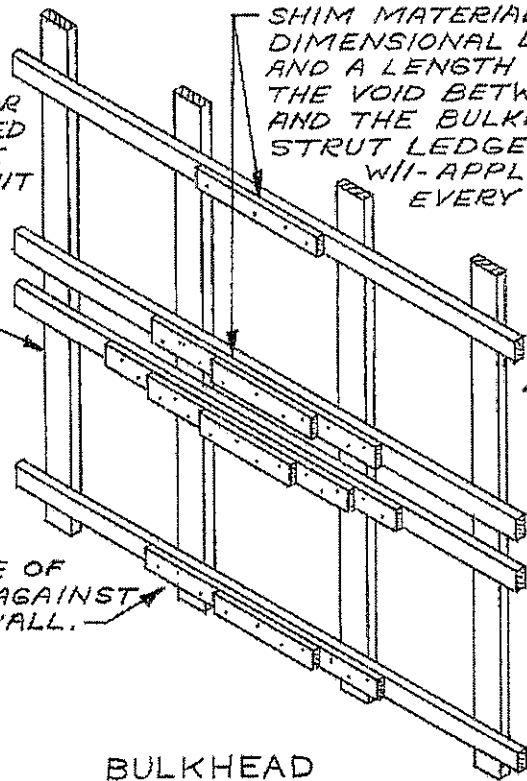
FOR USE AT THE END OF A LOAD OF PALLETIZED ITEMS, OR OF SKIDDED UNITS (BOXES LENGTHWISE)

CENTER GATE FOR A LOAD OF SKIDDED UNITS WHEN THE BOXES ON THE UNIT ARE CROSSWISE IN THE CAR. SEE THE DETAIL ON PAGE 67.

SHIM MATERIAL, 4" WIDE PLYWOOD OR DIMENSIONAL LUMBER OF A THICKNESS AND A LENGTH AS REQUIRED TO FILL THE VOID BETWEEN THE CAR END WALL AND THE BULKHEAD. NAIL TO THE STRUT LEDGER AND/OR LAMINATE W/1-APPLICABLY SIZED NAIL EVERY 6".

LOAD-SIDE OF BULKHEAD.

PLACE THIS SIDE OF THE BULKHEAD AGAINST THE CAR END WALL.



BULKHEAD

FOR USE AT THE END OF A LOAD OF SKIDDED UNITS (BOXES CROSSWISE).

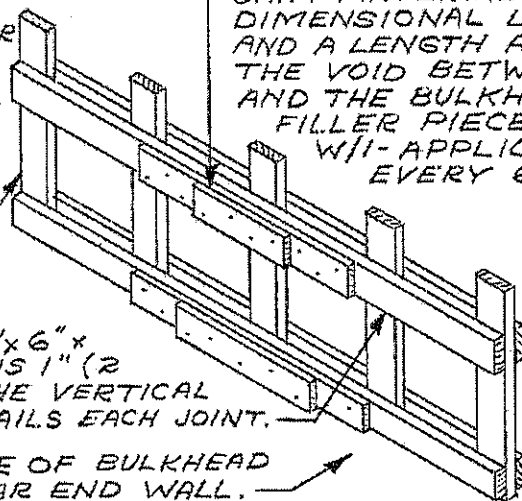
CENTER GATE FOR A LOAD OF SEPARATE LOADING PROJECTILES. SEE THE DETAIL ON PAGE 76. NOTE TO OMIT THE STRUT LEDGERS.

SHIM MATERIAL, 6" WIDE PLYWOOD OR DIMENSIONAL LUMBER OF A THICKNESS AND A LENGTH AS REQUIRED TO FILL THE VOID BETWEEN THE CAR END WALL AND THE BULKHEAD. NAIL TO THE FILLER PIECE AND/OR LAMINATE W/1-APPLICABLY SIZED NAIL EVERY 6".

LOAD-SIDE OF BULKHEAD.

FILLER PIECE, 2"x6" x CAR WIDTH MINUS 1" (2 REQD). NAIL TO THE VERTICAL PIECES W/3-10d NAILS EACH JOINT.

PLACE THIS SIDE OF BULKHEAD AGAINST THE CAR END WALL.



BULKHEAD

FOR USE AT THE END OF A LOAD OF SEPARATE LOADING PROJECTILES.