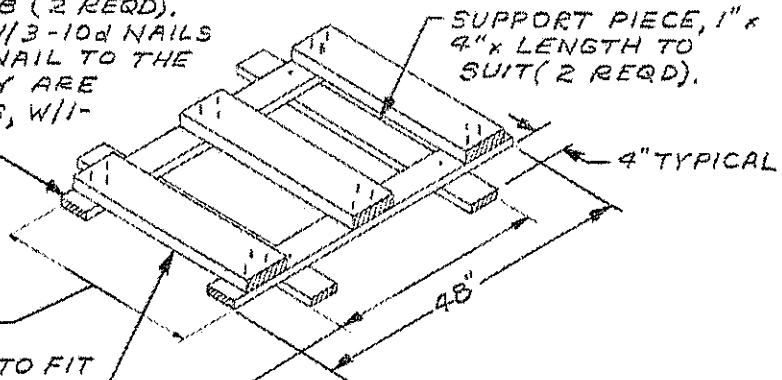


TYPICAL LOAD OF 3/50 CARTRIDGE IN TANK M5
AND MODS (FLEET ISSUE UNIT LOAD) IN
A 50'-6" LONG CONVENTIONAL BOX CAR

LONGITUDINAL PIECE, 1" x 4" x 48" (2 REQD).
 NAIL TO THE CROSS BRACES W/3-10d NAILS
 AT EACH JOINT AND CLINCH. NAIL TO THE
 SUPPORT PIECES, AFTER THEY ARE
 INSERTED IN FORK POCKETS, W/1-
 6d NAIL AT EACH JOINT.



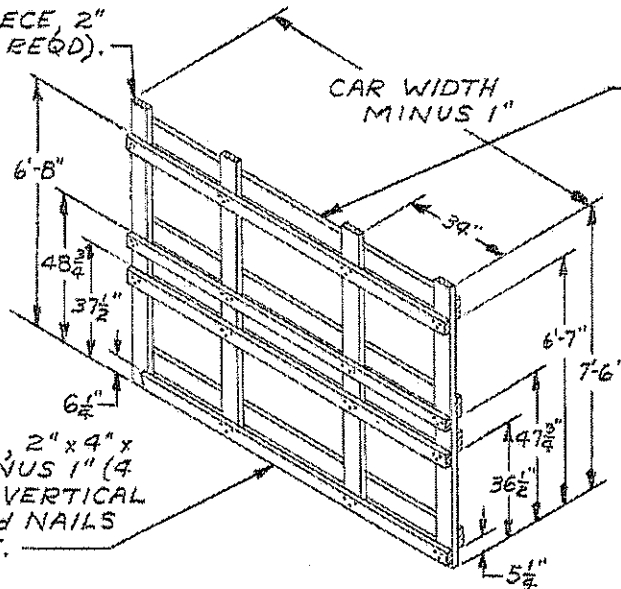
DISTANCE BETWEEN POSTS
 OF PALLETS ACROSS THE CAR.

CROSS BRACE, 2" x 6" x CUT TO FIT
 BETWEEN POSTS OF LATERALLY
 ADJACENT PALLETS (3 REQD).

DISTANCE BETWEEN INSIDE OF
 OUTER POSTS OF PALLET.

ANTI-SWAY BRACE

VERTICAL PIECE, 2" x 6" x 7'-6" (4 REQD).

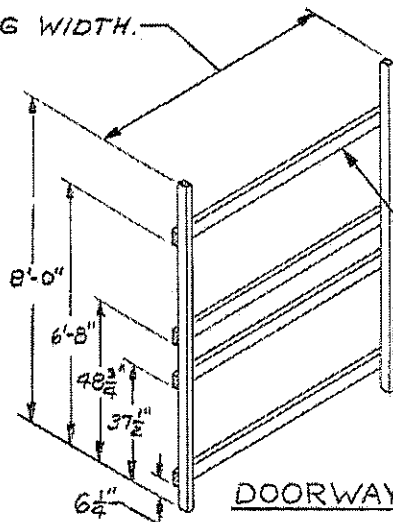


HORIZONTAL PIECE, 2" x 6" x CAR WIDTH MINUS 1" (4 REQD). NAIL TO THE VERTICAL PIECES W/3-10d NAILS AT EACH JOINT.

STRUT LEDGER, 2" x 4" x CAR WIDTH MINUS 1" (4 REQD). NAIL TO VERTICAL PIECES W/3-10d NAILS AT EACH JOINT.

CENTER GATE

DOOR OPENING WIDTH.

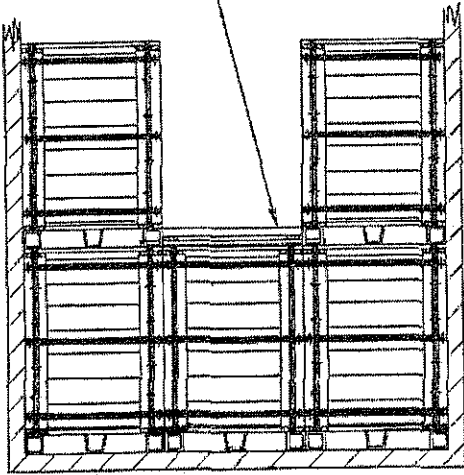


VERTICAL PIECE, 2" x 3" x 8'-0" (2 REQD). NAIL TO A DOOR POST W/1-12d NAIL EVERY 12". IF CAR HAS NON-NAILABLE POSTS, REFER TO PAGE 21 FOR GUIDANCE.

HORIZONTAL PIECE, 2" x 4" x DOOR OPENING WIDTH (4 REQD). NAIL TO THE VERTICAL PIECES W/2-10d NAILS AT EACH END.

DOORWAY PROTECTION

ANTI-SWAY BRACE (11 REQD). SEE THE DETAIL ON PAGE 57.



SECTION A-A

HORIZONTAL STRUT BRACING, 2"x4" x CAR WIDTH-1 (4 REQD). NAIL W/3-10d NAILS AT EACH JOINT.

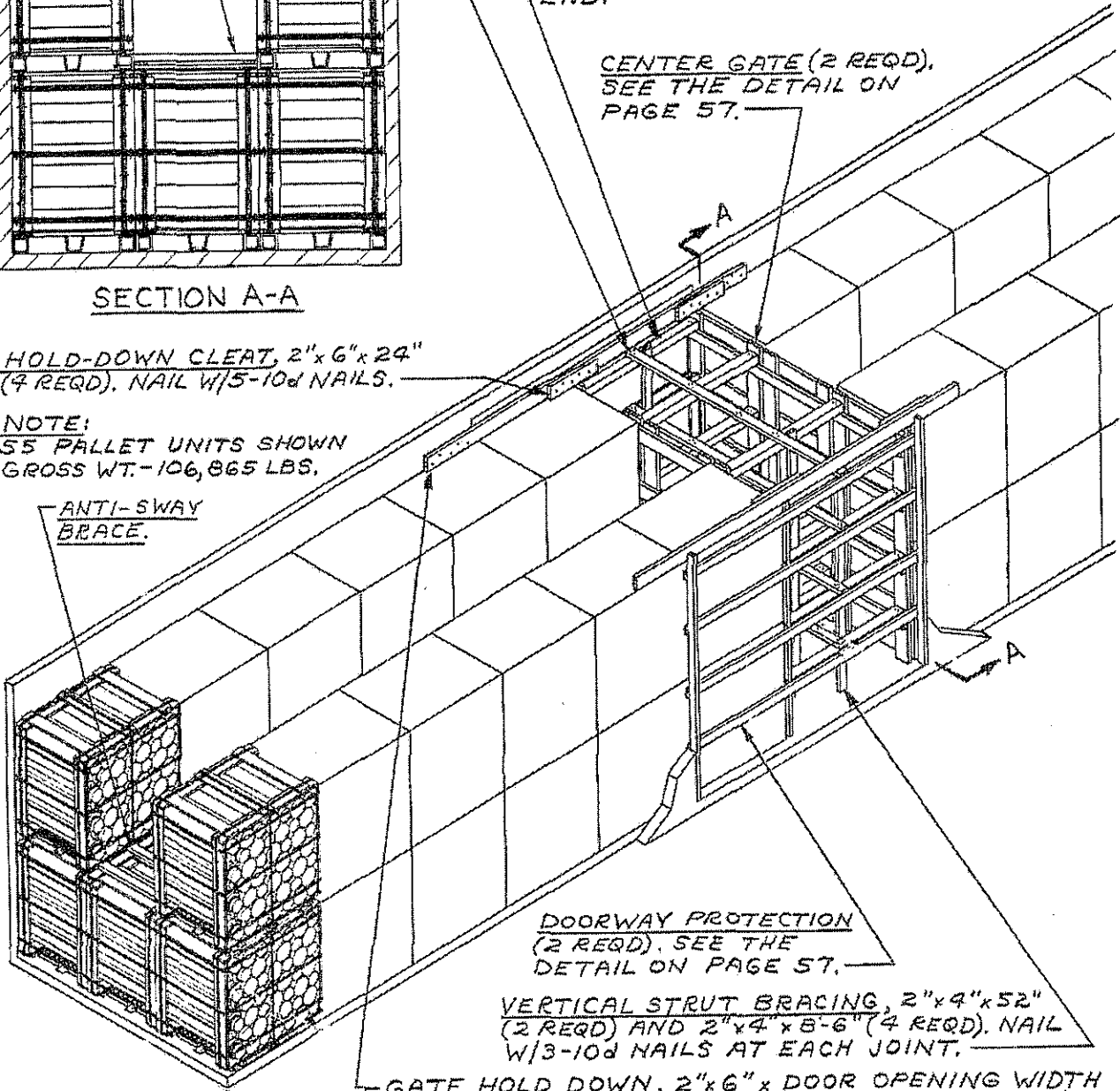
STRUT, 4"x4" x CUT TO FIT (20 REQD). TOE-NAIL TO GATE W/2-16d NAILS AT EACH END.

CENTER GATE (2 REQD). SEE THE DETAIL ON PAGE 57.

HOLD-DOWN CLEAT, 2"x6"x24" (4 REQD). NAIL W/5-10d NAILS.

NOTE:
55 PALLET UNITS SHOWN
GROSS WT.-106,865 LBS.

ANTI-SWAY BRACE.



DOORWAY PROTECTION (2 REQD). SEE THE DETAIL ON PAGE 57.

VERTICAL STRUT BRACING, 2"x4"x52" (2 REQD) AND 2"x4"x8'-6" (4 REQD). NAIL W/3-10d NAILS AT EACH JOINT.

GATE HOLD DOWN, 2"x6" x DOOR OPENING WIDTH + 24" (2 REQD). NAIL TO THE CAR SIDEWALL W/5-10d NAILS AT EACH END.

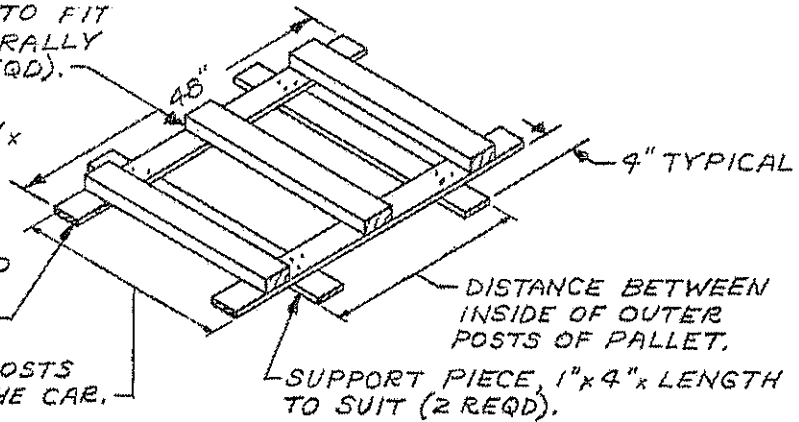
NOTE: IN 40'-6" LONG CARS, LOAD 6 UNIT LOADS IN EACH STACK. USE 24 STRUTS.

TYPICAL LOAD OF 5'/54 CARTRIDGE IN TANK M14
(DOMESTIC UNIT LOAD) IN A 50'-6" LONG BY
9'-2" WIDE CONVENTIONAL BOX CAR

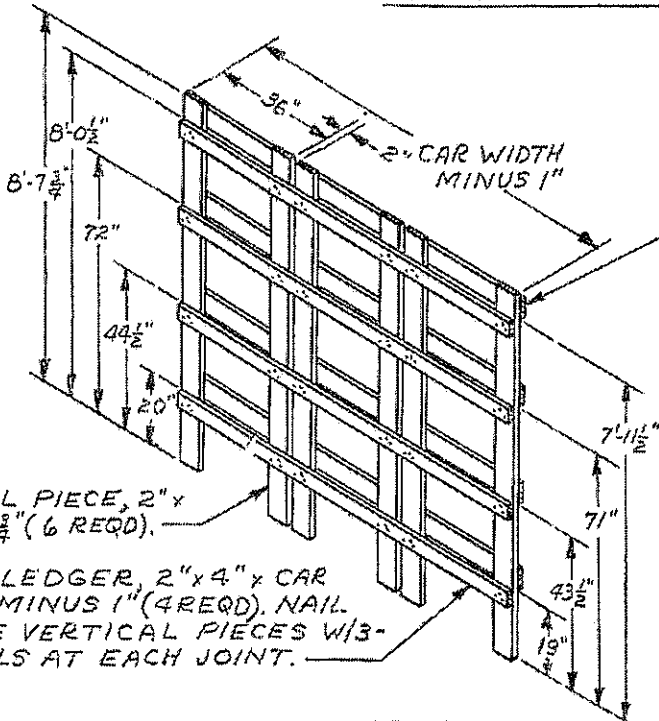
CROSS BRACE, 2"x4" x CUT TO FIT BETWEEN POSTS OF LATERALLY ADJACENT PALLETS (3 REQD).

LONGITUDINAL PIECE, 1"x4" x 98" (2 REQD). NAIL TO THE CROSS BRACES W/3-6d NAILS AT EACH JOINT. NAIL TO THE SUPPORT PIECES, AFTER THEY ARE INSERTED IN FORK POCKETS, W/3-6d NAILS AT EACH JOINT.

DISTANCE BETWEEN POSTS OF PALLETS ACROSS THE CAR.



ANTI-SWAY BRACE



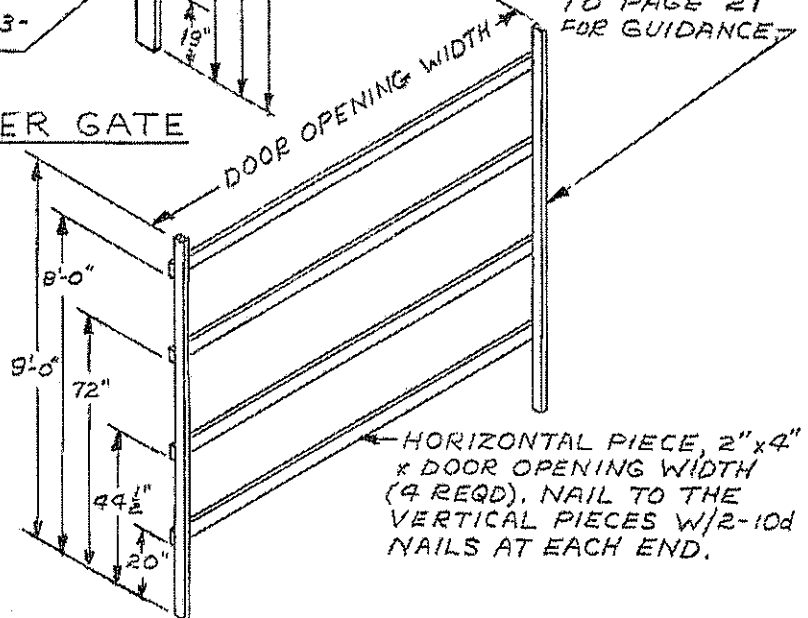
HORIZONTAL PIECE, 2"x6" x CAR WIDTH MINUS 1" (4 REQD). NAIL TO THE VERTICAL PIECES W/3-10d NAILS AT EACH JOINT.

VERTICAL PIECE, 2" x 6" x 8'-7 3/4" (6 REQD).

STRUT LEDGER, 2" x 4" x CAR WIDTH MINUS 1" (4 REQD). NAIL TO THE VERTICAL PIECES W/3-10d NAILS AT EACH JOINT.

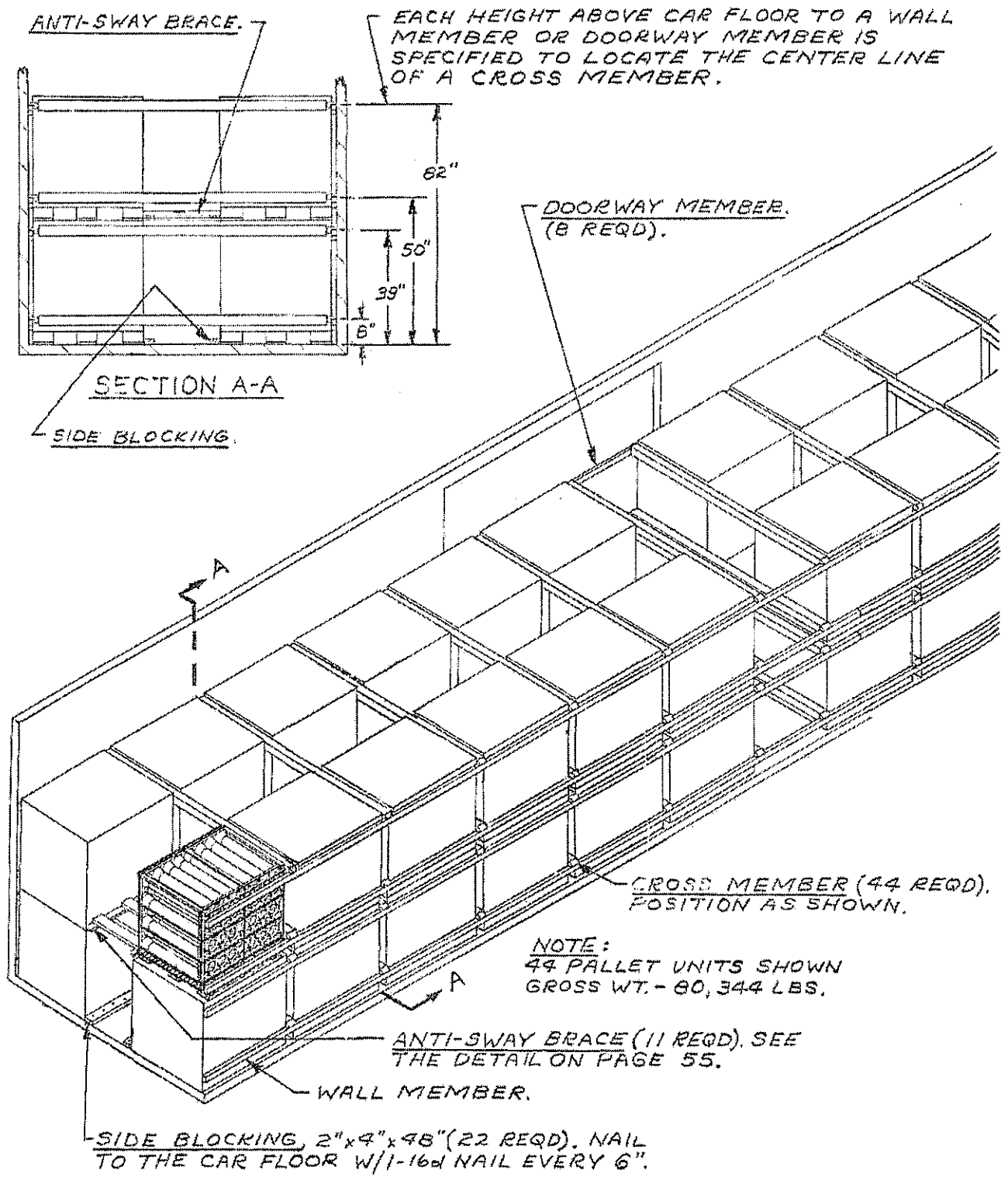
VERTICAL PIECE, 2" x 3" x 9'-0" (2 REQD). NAIL TO A DOOR POST W/1-12d NAIL EVERY 12". IF THE CAR HAS NON-AVAILABLE POSTS, REFER TO PAGE 21 FOR GUIDANCE.

CENTER GATE

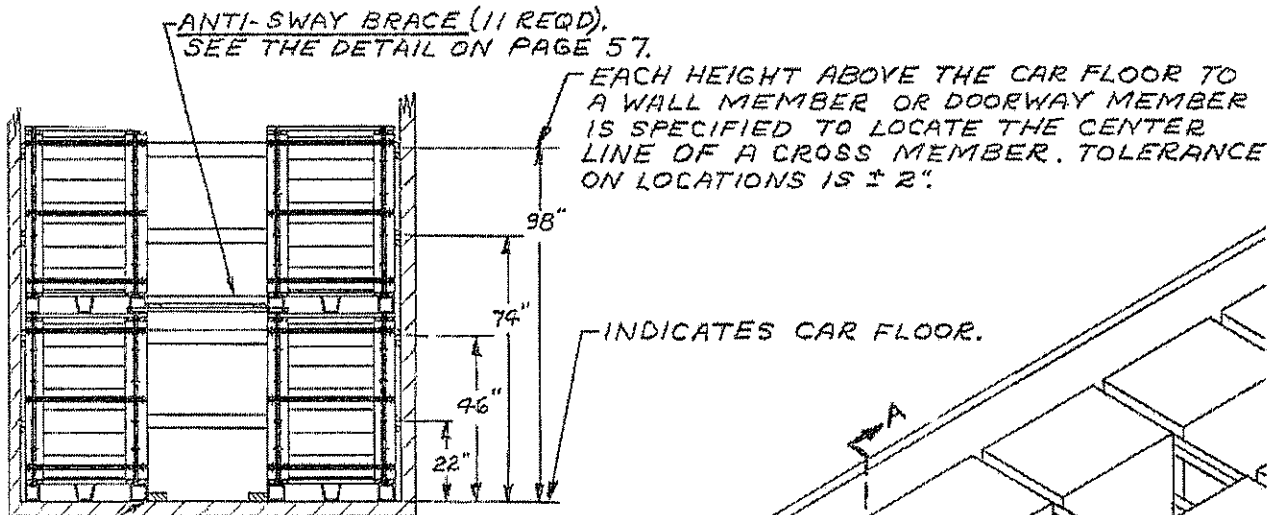


HORIZONTAL PIECE, 2" x 4" x DOOR OPENING WIDTH (9 REQD). NAIL TO THE VERTICAL PIECES W/2-10d NAILS AT EACH END.

DOORWAY PROTECTION



TYPICAL LOAD OF 3"/50 CARTRIDGE IN TANK M5
AND MODS (FLEET ISSUE UNIT LOAD) IN A 50'-6"
LONG BOX CAR EQUIPPED WITH MECHANICAL
BRACING DEVICES (CROSS MEMBERS)



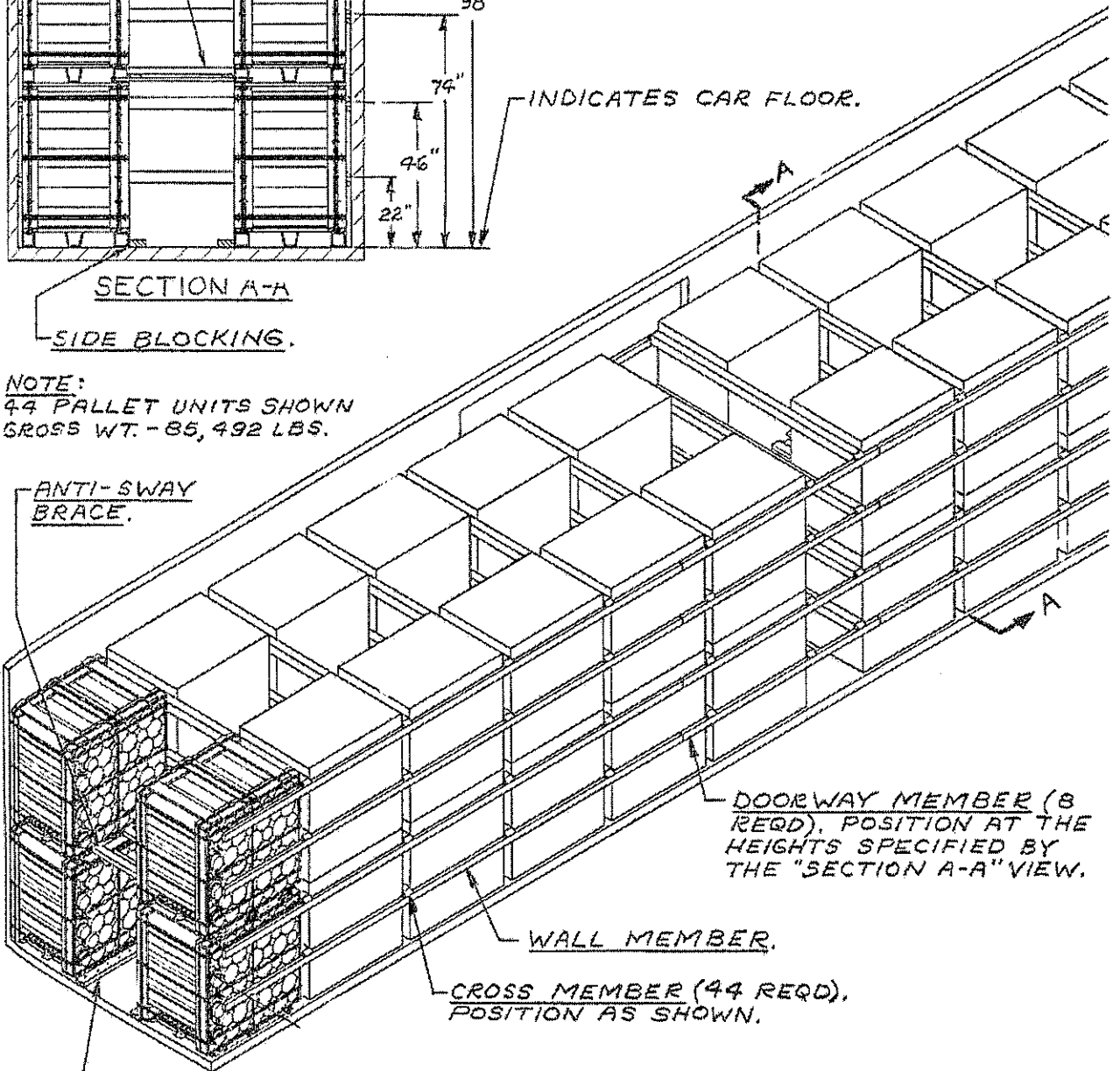
ANTI-SWAY BRACE (11 REQD).
SEE THE DETAIL ON PAGE 57.

EACH HEIGHT ABOVE THE CAR FLOOR TO A WALL MEMBER OR DOORWAY MEMBER IS SPECIFIED TO LOCATE THE CENTER LINE OF A CROSS MEMBER. TOLERANCE ON LOCATIONS IS $\pm 2"$.

SECTION A-A

SIDE BLOCKING.

NOTE:
44 PALLET UNITS SHOWN
GROSS WT. - 85,492 LBS.



ANTI-SWAY BRACE.

DOORWAY MEMBER (8 REQD). POSITION AT THE HEIGHTS SPECIFIED BY THE "SECTION A-A" VIEW.

WALL MEMBER.

CROSS MEMBER (44 REQD). POSITION AS SHOWN.

SIDE BLOCKING, 2"x4"x98" (22 REQD). NAIL TO THE CAR FLOOR W/1-16d NAIL EVERY 6".

TYPICAL LOAD OF 5"/54 CARTRIDGE IN TANK M14 (DOMESTIC UNIT LOAD) IN A 50'-6" LONG BOX CAR EQUIPPED WITH MECHANICAL BRACING DEVICES (CROSS MEMBERS)