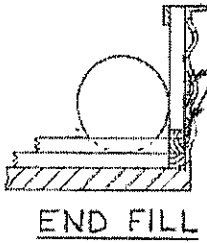


NOTE:
20 CONTAINERS SHOWN
GROSS WT. - 53,455 LBS.

TYPICAL LOAD OF ONE-TON CONTAINERS
IN 50'-6" LONG BY 9'-6" WIDE GONDOLA CAR



SOLID FILL TO FILL VOIDS OF CORRUGATIONS NEAR POINT OF CONTAINER CONTACT WITH 4" x 4" UPRIGHTS. NAIL W/12d NAILS.

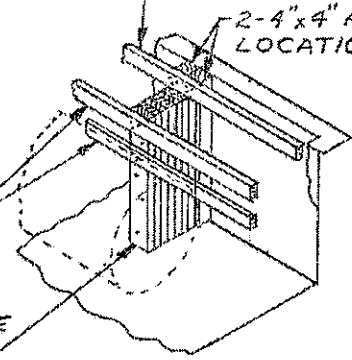
END FILL

2" x 4" x CAR WIDTH - 1" NAIL W/3-12d NAILS AT EACH JOINT.

2-4" x 4" AT EACH LOCATION.

2" x 4" x CAR WIDTH - 1" (2 REQD), POSITION 1 AT TOP OF FILL AND 1 AS LOW AS PRACTICAL. NAIL W/3-12d NAILS AT EACH JOINT.

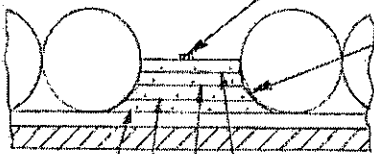
FILL MATERIAL, 2" x 6" x CAR SIDE HEIGHT - 4", NAIL TO 4" x 4" AND/OR LAMINATE W/4-10d NAILS.



SOLID FILL DETAIL

THIS TYPE FILL IS APPLICABLE FOR UP TO 12" IN EITHER END OF A CAR. FOR AN EXCESS SPACE OF MORE THAN 24", SEE THE "CENTER FILL DETAIL" BELOW.

TIE PIECE, 2" x 4" x CAR WIDTH - 1" (1 REQD EVERY 48"). NAIL W/3-12d NAILS EACH JOINT.



TOENAIL EACH SIDE W/1-16d NAIL EVERY 12".

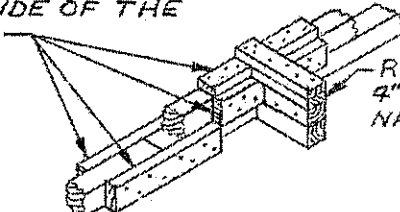
A B C D

CENTER FILL DETAIL

THIS TYPE FILL IS APPLICABLE FOR A SPACE OF 24" OR MORE. FOR LESS THAN 24" SPACE, SEE THE "SOLID FILL DETAIL" ABOVE.

SPLICE PIECE, 2" x 4" x 24" (2 REQD EACH JOINT). NAIL W/4-12d NAILS ON EACH SIDE OF THE JOINT.

RISE R PIECE, 2" x 4" x CUT TO FIT. NAIL W/4-12d NAILS.



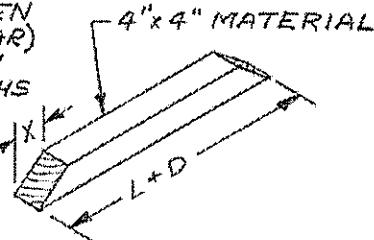
SPLICING DETAIL

THIS VIEW SHOWS TYPICAL SPLICING OF THE TOP LAYER OF THE DOUBLED 4" x 4" x CAR LENGTH PIECES WHEN JOINT IS NEAR A STRUT, AND ALSO THE SPLICING OF THE BOTTOM LAYER PIECES.

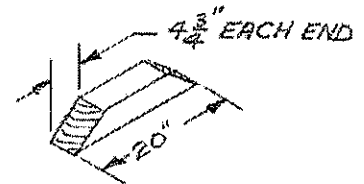
<u>CENTER FILL CHART</u>			
	X	ANGLE	L*
A	4-3/4"	37°	20"
B	2-1/4"	53°	10-1/2"
C	1-1/4"	70°	4-1/4"
D	-	90°	AS REQD

*LENGTH OF PIECE MARKED ⓐ (LENGTH OF VOID SPACE BETWEEN CONTAINERS NEAR CENTER OF CAR) MUST BE ADDED TO LENGTH IN THE CHART FOR TOTAL LENGTHS OF CHOCK BLOCKS ⓐ, ⓑ OR ⓒ.

EACH END.



CENTER-FILL CHOCK BLOCK



CHOCK BLOCK
4" x 4" MATERIAL