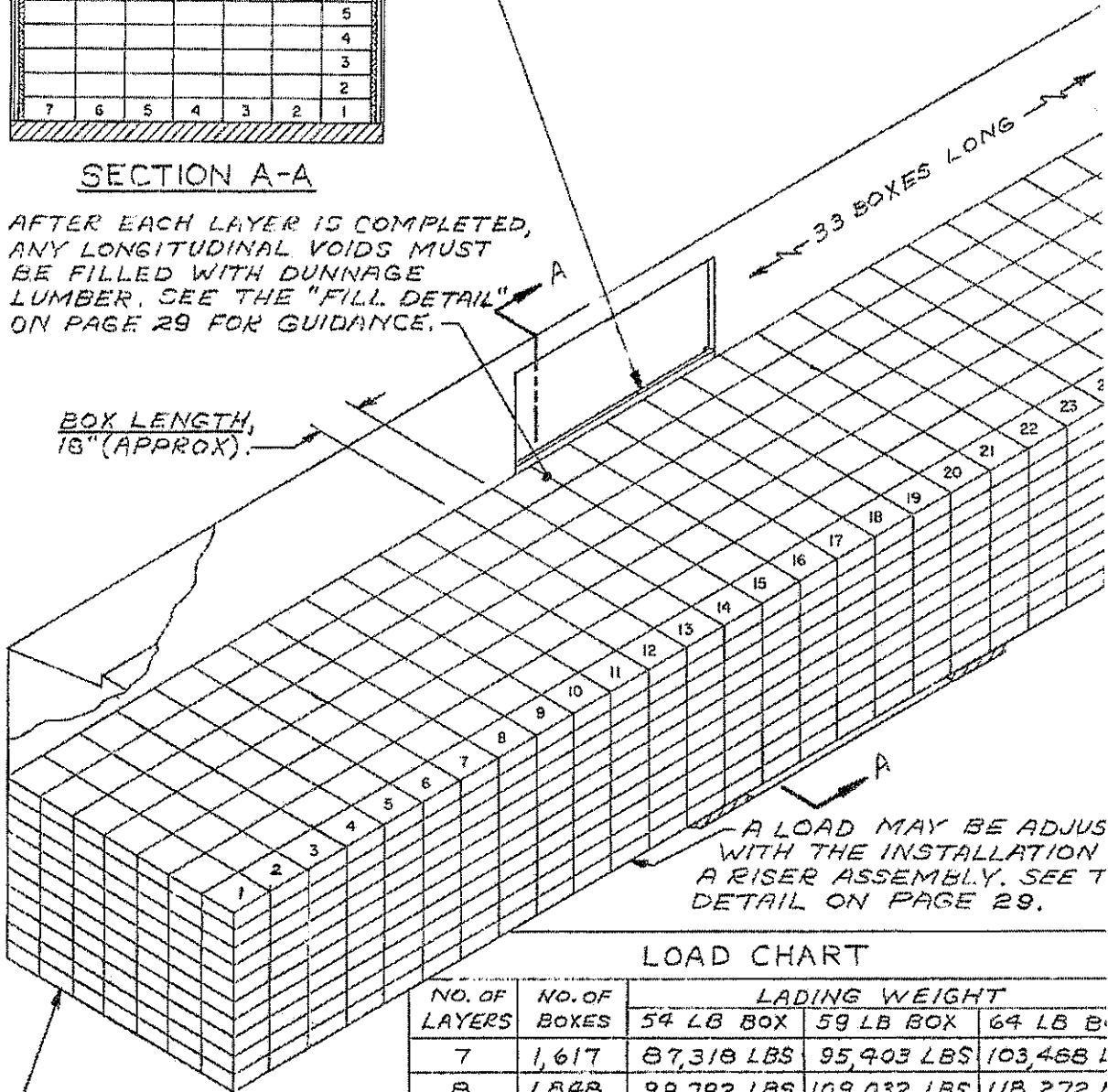


SECTION A-A

AFTER EACH LAYER IS COMPLETED, ANY LONGITUDINAL VOIDS MUST BE FILLED WITH DUNNAGE LUMBER. SEE THE "FILL DETAIL" ON PAGE 29 FOR GUIDANCE.

BOX LENGTH, 18" (APPROX).

DOORWAY PROTECTION (2 REQD). SEE THE DETAIL OF THE SOLID-FACED GATE ON PAGE 21.



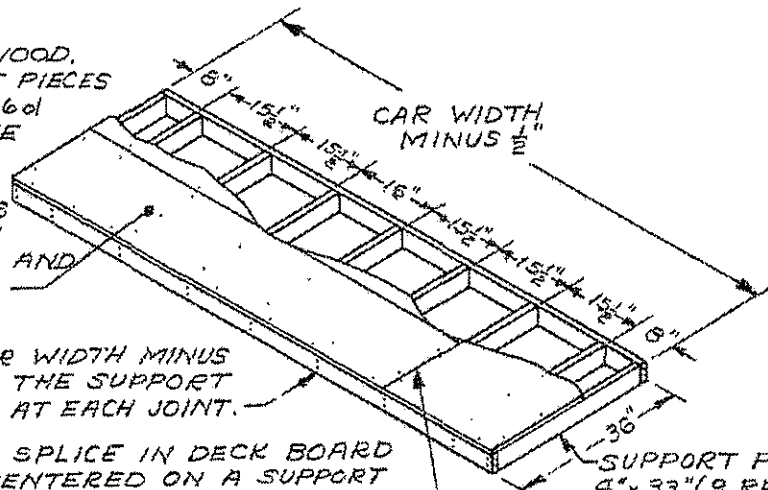
IF A CAR HAS BOWED END WALLS, SEE THE "BULKHEAD" DETAIL ON PAGE 8 FOR GUIDANCE.

LOAD CHART

NO. OF LAYERS	NO. OF BOXES	LOADING WEIGHT		
		54 LB BOX	59 LB BOX	64 LB BOX
7	1,617	87,318 LBS	95,903 LBS	103,468 LBS
8	1,848	99,792 LBS	109,032 LBS	118,272 LBS
9	2,079	112,266 LBS	122,661 LBS	133,056 LBS
10	2,310	124,740 LBS	136,290 LBS	147,840 LBS
11	2,541	137,214 LBS	149,919 LBS	
12	2,772	149,688 LBS		

TYPICAL LOAD OF BULK EXPLOSIVES IN FIBERBOARD BOXES (UNPALLETIZED) IN A 50'-6" LONG BY 9'-2" WIDE CONVENTIONAL BOX CAR

DECK BOARD, $\frac{1}{2}$ " PLYWOOD,
 NAIL TO THE SUPPORT PIECES
 AND TIE PIECES W/1-6d
 NAIL EVERY 12". NOTE
 THAT NOMINAL 1"
 MATERIAL MAY BE
 SUBSTITUTED. PIECES
 WILL BE CAR WIDTH
 MINUS $\frac{1}{2}$ " IN LENGTH AND
 NAILED W/6d NAILS.



TIE PIECE, 2"x4"x CAR WIDTH MINUS
 $\frac{1}{2}$ " (2 REQD). NAIL TO THE SUPPORT
 PIECES W/2-10d NAILS AT EACH JOINT.

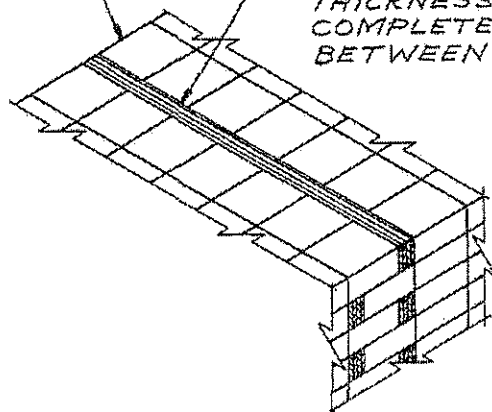
CROSSWISE SPLICE IN DECK BOARD
 MUST BE CENTERED ON A SUPPORT
 PIECE AS SHOWN. LENGTHWISE SPLICE
 CAN BE LOCATED AT ANY POSITION.

SUPPORT PIECE, 2"x
 4"x 33" (9 REQD).

RISER ASSEMBLY

THE ASSEMBLY SHOWN ABOVE IS DESIGNED
 TO RAISE TWO (2) STACKS. THIS IS THE
 MINIMUM NUMBER OF STACKS PERMITTED
 WHEN APPLYING A RISER IN THE LOAD
 DEPICTED ON PAGE 28.

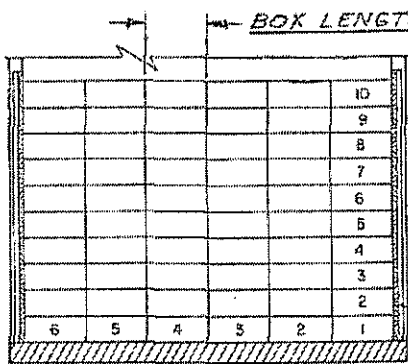
INDICATES SIDE
 OF LOAD.



FILL MATERIAL, 8" WIDE LUMBER BY
 CAR WIDTH IN LENGTH AND OF A
 THICKNESS AS REQUIRED TO
 COMPLETELY FILL THE VOID SPACE
 BETWEEN BOXES AS SHOWN.

FILL DETAIL

THE DETAIL SHOWN ABOVE DEPICTS THE METHOD
 OF INSTALLING FILL MATERIAL IN EACH LAYER.
 FILL MATERIAL MUST BE INSTALLED ALTERNATELY
 IN EACH LAYER AND SHOULD BE USED NEAR THE
 CENTER OF THE LOAD. FILL MATERIAL IS
 REQUIRED TO FILL ANY LONGITUDINAL VOID
 WITHIN THE LAYERS OF A LOAD. ALTHOUGH THE
 DETAIL SHOWS LENGTHWISE POSITIONED BOXES,
 THE PRINCIPLES ARE ALSO APPLICABLE FOR LOADS
 OF CROSSWISE POSITIONED BOXES.

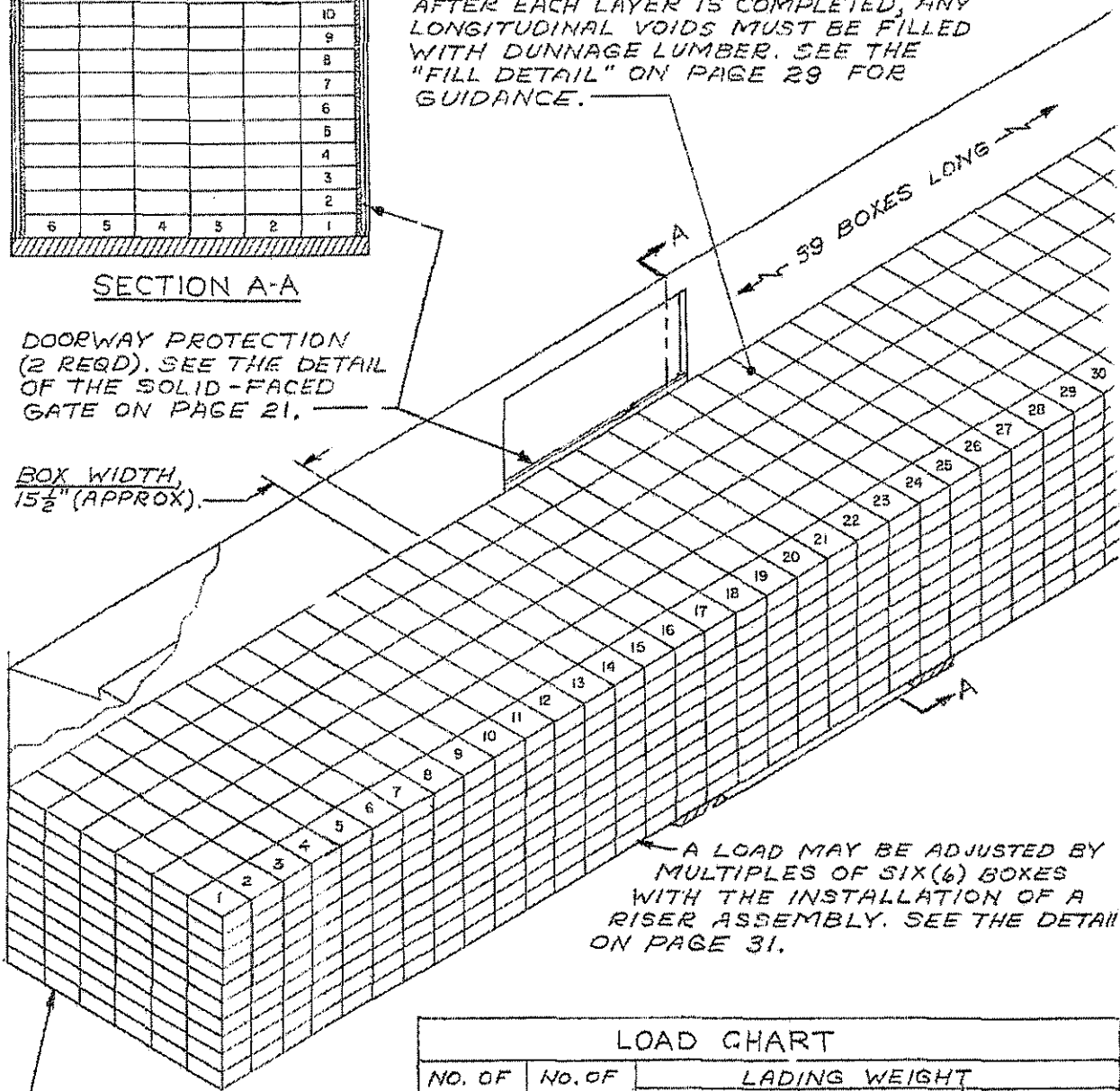


SECTION A-A

AFTER EACH LAYER IS COMPLETED, ANY LONGITUDINAL VOIDS MUST BE FILLED WITH DUNNAGE LUMBER. SEE THE "FILL DETAIL" ON PAGE 29 FOR GUIDANCE.

DOORWAY PROTECTION (2 REQD). SEE THE DETAIL OF THE SOLID-FACED GATE ON PAGE 21.

BOX WIDTH, 15 1/2" (APPROX).

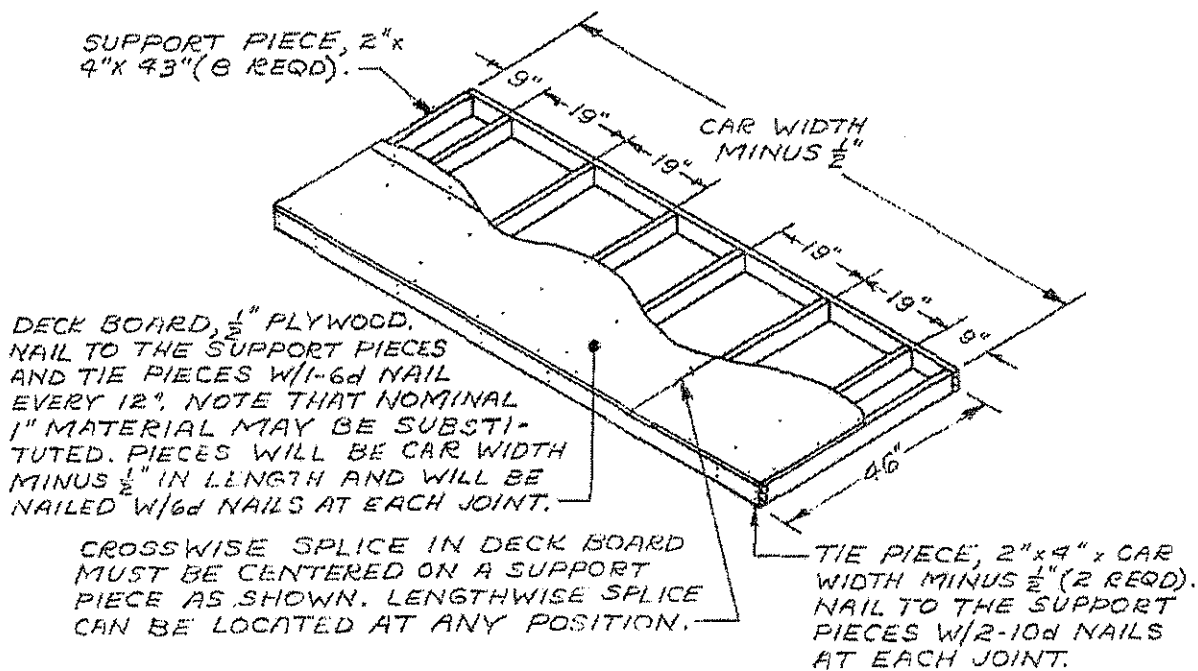


A LOAD MAY BE ADJUSTED BY MULTIPLES OF SIX (6) BOXES WITH THE INSTALLATION OF A RISER ASSEMBLY. SEE THE DETAIL ON PAGE 31.

IF A CAR HAS BOWED END WALLS, SEE "BULKHEAD" DETAIL ON PAGE 9 FOR GUIDANCE.

LOAD CHART				
NO. OF LAYERS	NO. OF BOXES	LADING WEIGHT		
		54 LB BOX	59 LB BOX	64 LB BOX
7	1,638	88,452 LBS	96,642 LBS	104,832 LBS
8	1,872	101,088 LBS	110,448 LBS	119,808 LBS
9	2,106	113,724 LBS	124,254 LBS	134,784 LBS
10	2,340	126,360 LBS	138,060 LBS	149,760 LBS
11	2,574	139,996 LBS	151,866 LBS	
12	2,808	151,632 LBS		

TYPICAL LOAD OF BULK EXPLOSIVES IN FIBERBOARD BOXES (UNPALLETIZED) IN A 50'-6" LONG BY 9'-4" WIDE CONVENTIONAL BOX CAR



RISER ASSEMBLY

THE ASSEMBLY SHOWN ABOVE IS DESIGNED TO RAISE THREE (3) STACKS. THIS IS THE MINIMUM NUMBER OF STACKS PERMITTED WHEN APPLYING A RISER IN THE LOAD DEPICTED ON PAGE 30.