

SPACER BLOCK (2 REQD). SEE THE DETAIL ON PAGE 41.

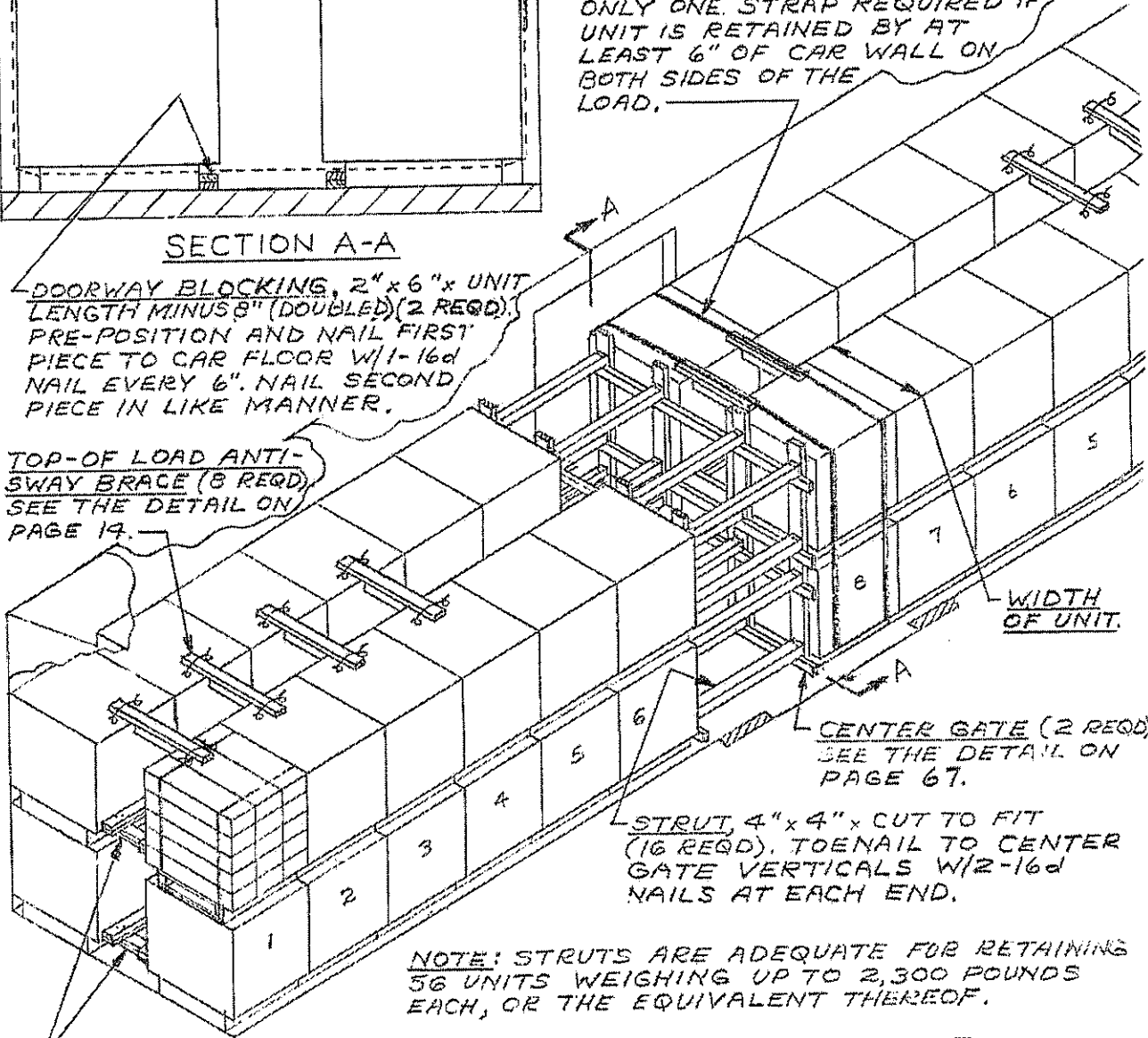
NOTE: 56 SKIDDED UNITS SHOWN  
GROSS WT. - 129,000 LBS. (EST).

DOORWAY PROTECTION STRAP,  $1\frac{1}{2}$ " x .035" x REF 35°0" STEEL STRAPPING (2 REQD). INSTALL AROUND LOAD UNIT IN DOORWAY. STAPLE TO SPACER BLOCK W/2 STAPLES. ONLY ONE STRAP REQUIRED IF UNIT IS RETAINED BY AT LEAST 6" OF CAR WALL ON BOTH SIDES OF THE LOAD.

SECTION A-A

DOORWAY BLOCKING, 2" x 6" x UNIT LENGTH MINUS 8" (DOUBLED) (2 REQD). PRE-POSITION AND NAIL FIRST PIECE TO CAR FLOOR W/1-16d NAIL EVERY 6". NAIL SECOND PIECE IN LIKE MANNER.

TOP-OF LOAD ANTI-SWAY BRACE (8 REQD). SEE THE DETAIL ON PAGE 19.



WIDTH OF UNIT.

CENTER GATE (2 REQD). SEE THE DETAIL ON PAGE 67.

STRUT, 4" x 4" x CUT TO FIT (16 REQD). TOENAIL TO CENTER GATE VERTICALS W/2-16d NAILS AT EACH END.

NOTE: STRUTS ARE ADEQUATE FOR RETAINING 56 UNITS WEIGHING UP TO 2,300 POUNDS EACH, OR THE EQUIVALENT THEREOF.

ANTI-SWAY BRACE (27 REQD). SEE THE DETAIL ON PAGE 67. INSTALL BETWEEN LATERALLY ADJACENT SKIDDED UNITS AT ALL LOCATIONS EXCEPT BOTTOM LAYER OF LOAD UNIT NO. 8 WHICH IS IN DOORWAY AREA.

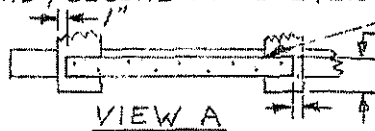
TYPICAL LOAD OF SKIDDED UNITS OF BOXED AMMUNITION IN A 50'-6" LONG BY 9'-2" WIDE CONVENTIONAL BOX CAR

DISTANCE FROM END OF BOX TO SKID BASE PLUS 3" FOR TYPE I BASE, OR PLUS 5" FOR TYPE II,

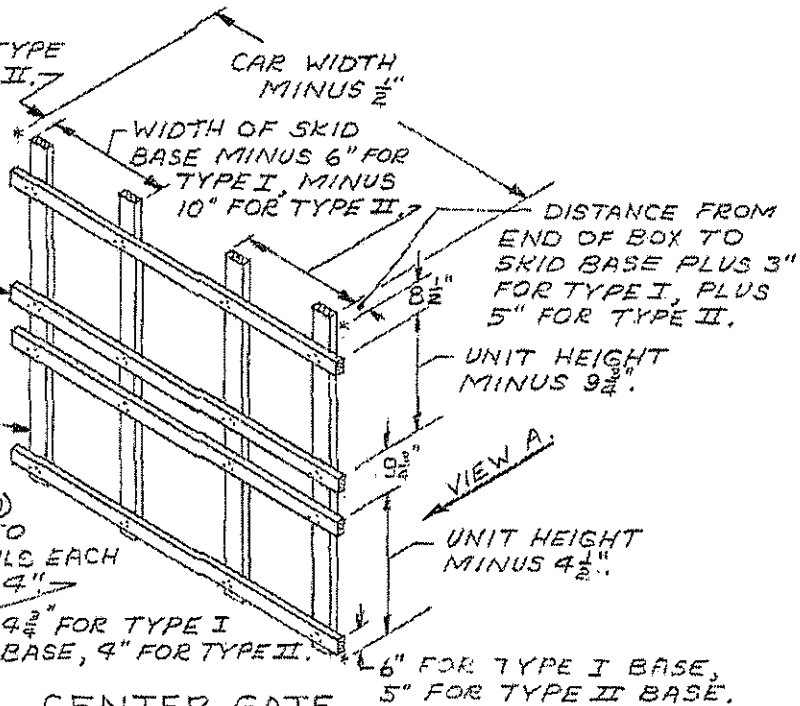
STRUT LEDGER, 2"x4"x CAR WIDTH MINUS 1/2" (4 REQD). NAIL TO THE VERTICAL PIECES W/3-10d NAILS AT EACH JOINT.

VERTICAL PIECE, 2"x6"x LOAD HEIGHT PLUS 4" (4 REQD).

GATE HOLD DOWN AND LATERAL BLOCKING CLEAT, 2"x3"x CUT TO FIT (DOUBLED) (2 REQD). NAIL FIRST PIECE TO GATE VERTICAL W/3-10d NAILS EACH END & SECOND PIECE EVERY 4"



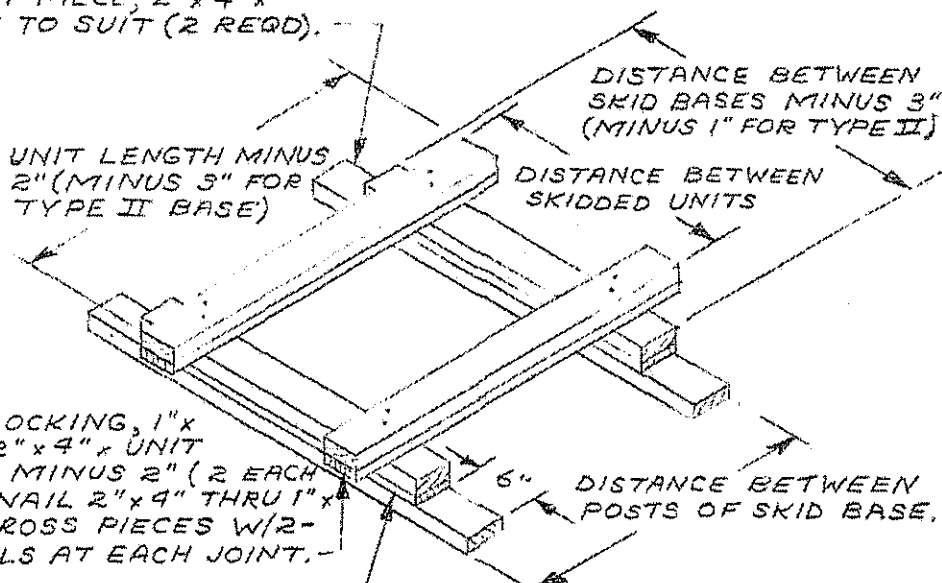
VIEW A



CENTER GATE

THIS GATE IS FOR USE ONLY AGAINST THE WIDTH OF A SKIDDED UNIT (SIDES OF BOXES). GATE SHOWN IS FOR A 2-LAYER LOAD. A GATE FOR A 1-HIGH LOAD WILL BE UNIT HEIGHT PLUS 4"

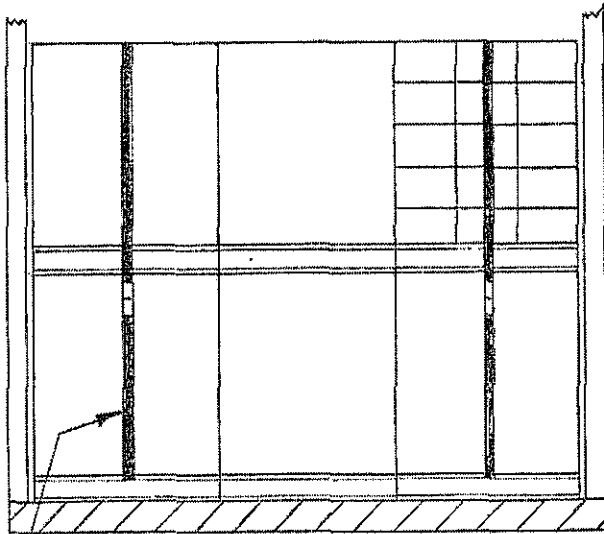
SUPPORT PIECE, 2"x4"x LENGTH TO SUIT (2 REQD).



SIDE BLOCKING, 1"x4" AND 2"x4"x UNIT LENGTH MINUS 2" (2 EACH REQD). NAIL 2"x4" THRU 1"x4" TO CROSS PIECES W/2-20d NAILS AT EACH JOINT.

CROSS PIECE, 1"x4" AND 2"x4"x DISTANCE BETWEEN SKID BASES MINUS 3" (2 EACH REQD). NAIL 2"x4" THRU 1"x4" TO THE SUPPORT PIECE W/1-12d NAIL NEAR EACH END.

ANTI-SWAY BRACE



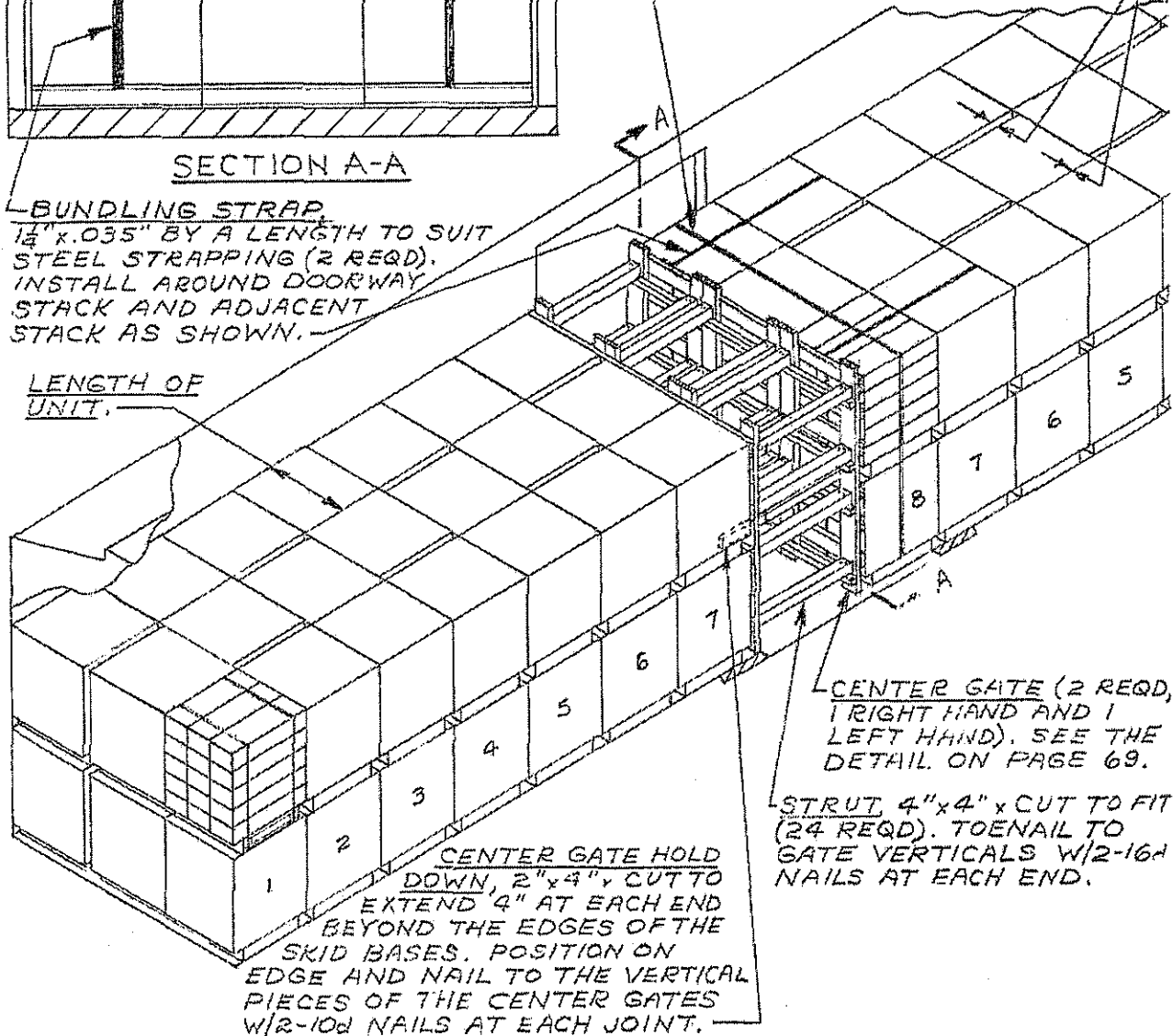
SECTION A-A

NOTE THAT IF THE TOTAL EXCESS SPACE ACROSS THE WIDTH OF THE CAR EQUALS OR EXCEEDS THE WIDTH OF TWO VERTICAL END CLEATS OF A BOX, ANTI-SWAY BRACING MUST BE INSTALLED. SEE THE DETAIL ON PAGE 69.

DOORWAY PROTECTION STRAP,  $\frac{1}{4}$ " x .035" BY A LENGTH TO SUIT STEEL STRAPPING (1 REQD). INSTALL AROUND LOAD UNIT IN DOORWAY.

BUNDLING STRAP,  $\frac{1}{4}$ " x .035" BY A LENGTH TO SUIT STEEL STRAPPING (2 REQD). INSTALL AROUND DOORWAY STACK AND ADJACENT STACK AS SHOWN.

LENGTH OF UNIT.



CENTER GATE (2 REQD, 1 RIGHT HAND AND 1 LEFT HAND). SEE THE DETAIL ON PAGE 69.

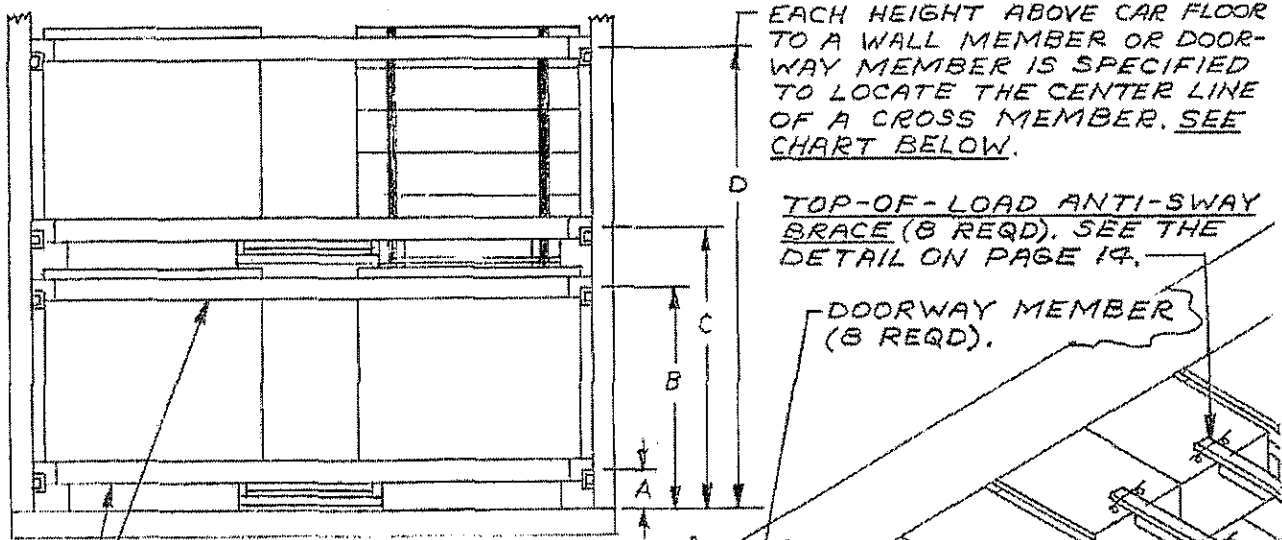
STRUT, 4" x 4" x CUT TO FIT (24 REQD). TOENAIL TO GATE VERTICALS W/2-16d NAILS AT EACH END.

CENTER GATE HOLD DOWN, 2" x 4" x CUT TO EXTEND 4" AT EACH END BEYOND THE EDGES OF THE SKID BASES. POSITION ON EDGE AND NAIL TO THE VERTICAL PIECES OF THE CENTER GATES W/2-10d NAILS AT EACH JOINT.

NOTE: 90 SKIDDED UNITS SHOWN  
GROSS WT - 124,200 LBS (EST).

TYPICAL LOAD OF SKIDDED UNITS OF BOXED AMMUNITION IN A 50'-6" LONG BY 9'-2" WIDE CONVENTIONAL BOX CAR





EACH HEIGHT ABOVE CAR FLOOR TO A WALL MEMBER OR DOORWAY MEMBER IS SPECIFIED TO LOCATE THE CENTER LINE OF A CROSS MEMBER. SEE CHART BELOW.

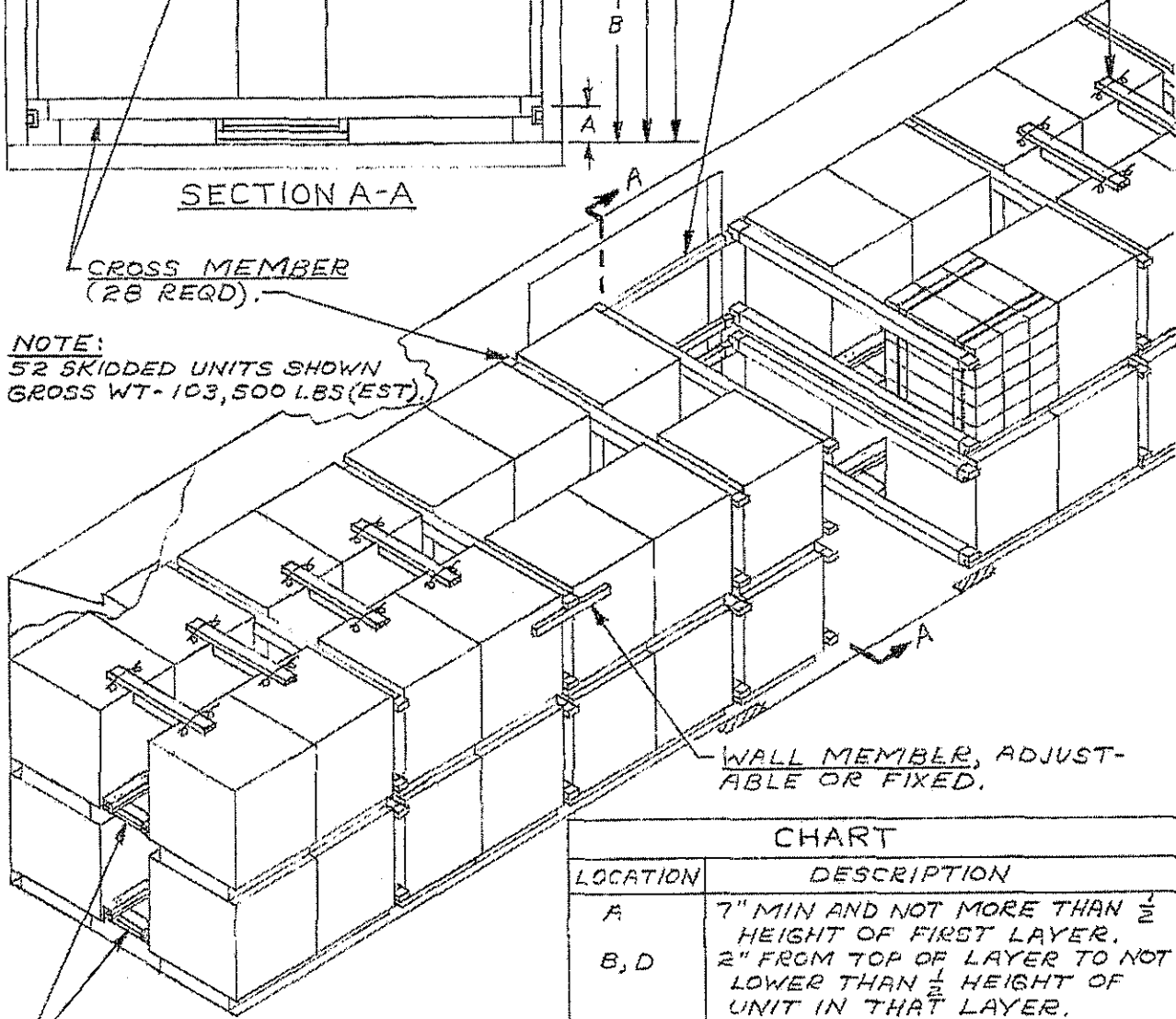
TOP-OF-LOAD ANTI-SWAY BRACE (8 REQD). SEE THE DETAIL ON PAGE 14.

DOORWAY MEMBER (8 REQD).

SECTION A-A

CROSS MEMBER (28 REQD).

NOTE: 52 SKIDDED UNITS SHOWN GROSS WT- 103,500 LBS (EST).



WALL MEMBER, ADJUSTABLE OR FIXED.

ANTI-SWAY BRACE (26 REQD). SEE DETAIL ON PAGE 67. INSTALL BETWEEN LATERALLY ADJACENT SKIDDED UNITS AT ALL LOCATIONS.

CHART	
LOCATION	DESCRIPTION
A	7" MIN AND NOT MORE THAN $\frac{1}{2}$ HEIGHT OF FIRST LAYER.
B, D	2" FROM TOP OF LAYER TO NOT LOWER THAN $\frac{1}{2}$ HEIGHT OF UNIT IN THAT LAYER.
C	7" FROM BOTTOM OF LAYER TO NOT MORE THAN $\frac{1}{2}$ HEIGHT OF UNIT IN THAT LAYER.

TYPICAL LOAD OF SKIDDED UNITS OF BOXED AMMUNITION IN 50'-6" LONG BOX CAR EQUIPPED WITH MECHANICAL BRACING DEVICES (CROSS MEMBERS)